

Custom Reporting for Ad Hoc or Scheduled Distribution

LiveAction’s next generation network performance and analytics platform, LiveNX, is all about harnessing big data analytics with real time visualizations and reporting to provide end to end visibility for situational awareness in today’s dynamic environment.

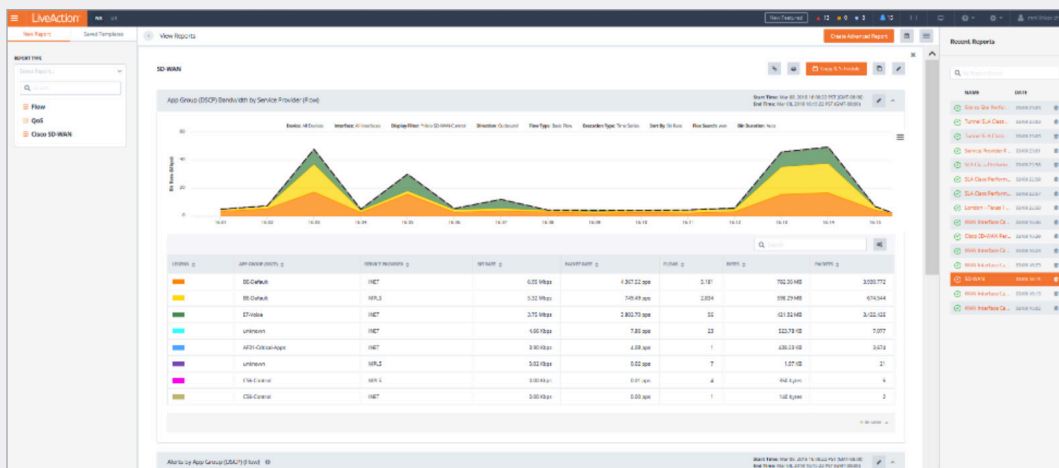
LiveNX Reports enable informed decisions, accelerate efficient operations, and ensure an exception customer experience through SLA, QoS Policy, Application and Network performance reporting and custom dashboards.

Custom Reporting

With near real time data collection and analysis, LiveNX offer NetOps organizations a broad set of report design options, from time duration, distribution lists through to the required datasets to be visualized in the report. NetOps can chose from an out-of-box set of report templates for faster deployments and learning, or reports can be customized to meet the needs of the business.

Networked Application Performance

LiveNX reports on the application performance across each domain as the data traverses; VPNs, Tunnels and Service Provider services, between sites, and for each device and interface to report on each element contributing to the end-to-end user experience.



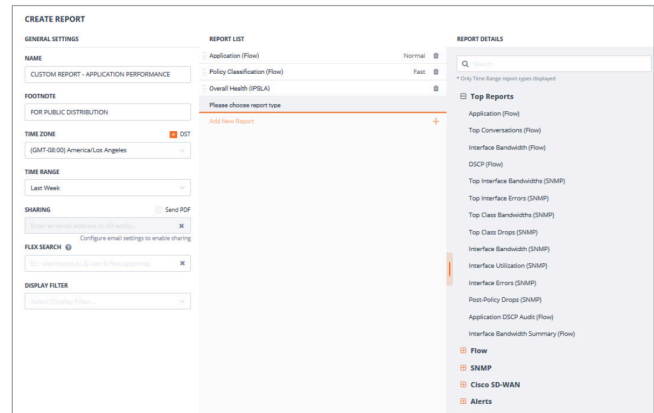
LiveNX – Device Inventory Story

Customization

LiveNX presents configurable alert templates for customization of Alerts for: severity, action and notification type.

NetOps is presented with a library of gathered datasets to select from. To meet your organizational reporting requirements, LiveNX presents an extensive menu to generate custom reports for the business.

- ➔ Top Reports: Top Conversations, Top Class Bandwidth, Top Interface Errors, and more.
- ➔ Flow: Site Traffic, Bidirectional Source/Destination Pair, All Unique Flows, IPs and Ports, Security analysis, and more.
- ➔ SNMP
- ➔ Alerts

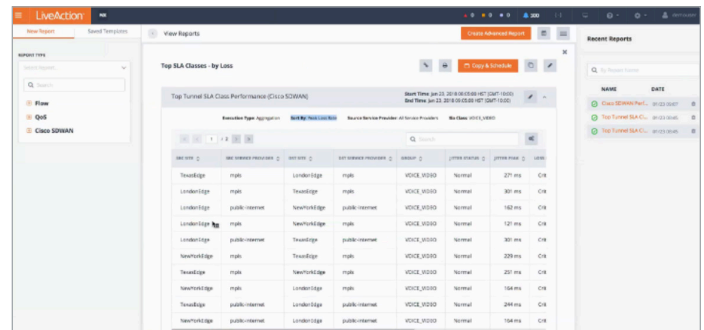


LiveNX – Custom Report Creation

SLA Validation

LiveNX reports validate the technical KPIs typically found in many Service Provider SLAs. Through LiveNX; Application DSCP Audit, Top Class Bandwidths, Top Class Drops are examples of SLA Performance Reporting that ensure the end to end quality of the service meets or exceeds your customer’s expectations.

- ➔ Top Class Bandwidths
- ➔ QoS: Pre-Policy and Post-Policy
- ➔ SD-WAN SLA Class Performance
- ➔ Tunnel SLA Class Performance
- ➔ Customize IPSLA tests
- ➔ Device Availability
- ➔ Interface Availability

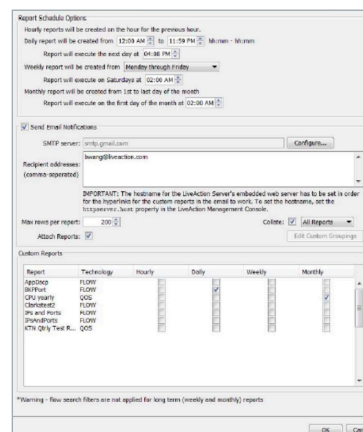


LiveNX Reporting – SLA Class by Loss

Ad hoc or Scheduled Distribution

LiveNX’s report scheduler ensures timely reports are distributed to custom lists at your convenience. Schedule reports such as daily health check request, Bandwidth, CPU and memory utilization to inform the organization of the current status of applications and network performance.

- ➔ Report Schedule Options allows the NetOps to schedule hourly, daily, weekly and monthly reports.
 - PDF — user-selectable choice between creating a PDF for distribution
 - Export to CSV — save all the data shown in the table, for further external analysis



LiveNX Report Scheduler